



Remember....

You can always get help - just call or email us.
(800) 880-7 495 Sabs@BarcodeGuy.com



Android Installation & Connection Instructions

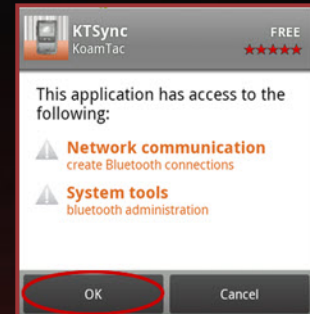
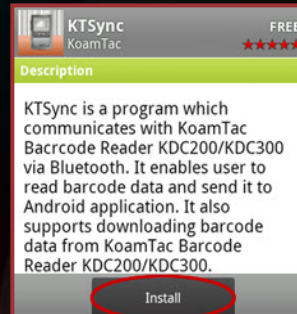
Congratulations on your purchase of a KDC200 or KDC300. Paired with your Android mobile device, you'll have the ability to scan barcodes directly into Droid applicaitons - email, web browser, worksheet or any place where you want to replace tedious keypad entry with quick & accurate barcode data collection.

In this instruction sheet, we'll show you how to install aKTSync, make a bluetooth connection and how to operate aKTSync. It's simple, so let's get started!

NOTE: a) Android OS ver 2.1 or higher is required.
b) The actions described below are common to all Android devices, although your screens may appear differently depending on your hardware vendor and OS version

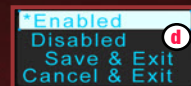
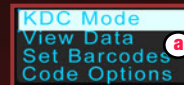
STEP 1 - Install aKTSync from the Marketplace

- Launch the "Market" applicaiton on your Android mobile device.
- Search for "KTSync". When found, click on the description to select it.
- Press the "Install" button. Press "OK" from the security screen to accept the installation.
- Confirm that installation was successful by finding "aKTSync" in your AppDrawer.



STEP 2 - Turn on KDC Bluetooth Power**

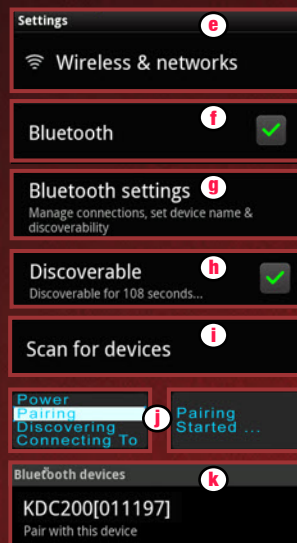
- Enter the Menu System on the KDC Barcode Scanner by pressing both side buttons at the same time. **a** Press the Upper Button 3 times & highlight "BT Service" **b** . Press the front Scan Button to Select. Now press the Scan Button again & select "Power" **c** . Using the side buttons, highlight "Enabled" & press the Scan Button. Highlight "Save & Exit" & Press the Scan Button. **d**



** Android Bluetooth connections use SPP (serial port protocol). If the scanner was used connected HID, change the "BT Config">"Connect Device" setting from HID to SPP

STEP 3 - Make Bluetooth Connection -

- Launch "Settings" on the Android mobile device
- Select "Wireless and Networks". Make sure the checkbox next to "Bluetooth" is checked.
- Click on "Bluetooth Settings".
- Check the box next to "Discoverable".
- Click on "Scan for Devices"
- We left the KDC Barcode Scanner with the "Pairing" option highlited. Press the front Scan Button to select it & start the pairing process.
- The Android mobile device will display the KDC's Model & 6 digits of the Serial #. Press the KDC Barcode Scanner list entry.



Front Scan Button - Selects Menu Items



Top Button

Bottom Button

Continue to Page 2



Remember....

You can always get help - just call or email us.

(800) 880-7495

Sabs@BarcodeGuy.com

WE LOVE PHONE CALLS!

STEP 3 - Make Bluetooth Connection (con't)

- viii. The Android will prompt you for a 4-digit PIN. Enter "0000" at the prompt and press "OK".
- ix. Allow a few moments for the pairing to complete. When paired, the Android device will display "Paired but not connected". (we will use aKTSync to make the connection).



** NOTE: DO NOT TRY TO CONNECT THE KDC Barcode Scanner USING THE BLUETOOTH MANAGER. AKTSync is used for the connection. Connecting using the Bluetooth Manager may cause a fatal error and require a reset of your Android device.

STEP 4 - Use aKTSync to connect to the KDC Barcode Scanner

- i. Navigate to the App Drawer on the Android mobile device, and click on the aKTSync program icon.
- ii. Press your device's "Menu Hard Key" from the left side of the hard keys to bring up the aKTSync menu. Select the "Connect" option on the top left.
- iii. From the list of paired devices, choose the KDC Barcode Scanner.
- iv. On the top menu bar of aKTSync, you'll see "connecting" then "connected". On the KDC Barcode Scanner, you'll see "Pairing Succeeded!!!" then "Bluetooth Connected".
- v. Congratulations, you're now ready to scan barcodes into the viewer. Note that the illustration is cropped-the scanned data moves from bottom to top..



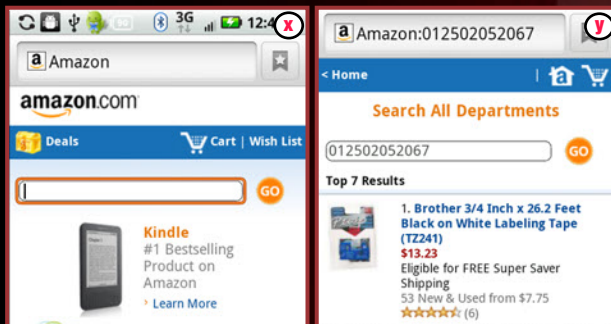
STEP 5 - Activate Keyboard Wedge

- i. Launch "Settings" on the Android mobile device.
- ii. Select "Language & Keyboard".
- iii. Check the box for "KTSync Keyboard".
- iv. Choose "OK" at the warning screen.
- v. The KDC Barcode scanner is now set up to scan data into whatever application you choose - just like you typed it in using the soft keypad!



Sample Operation of the KDC Barcode Scanner as a Keyboard Wedge Scanner

Using the KDC Barcode Scanner as a keyboard wedge is easy. When you scan a barcode, the data shows up where the cursor is flashing - just like you used the keypad to enter it. Here's a quick example:



- i. Open your browser, and navigate to Amazon.com (you could scan a barcode to do it!)
- ii. Touch the search box to give focus to it (the cursor should be flashing inside).
- iii. Scan a UPC barcode - in our case we scanned the UPC code from some label material. The default suffix launches the search.